

All CMS donors at the \$50 level and above are acknowledged in concert programs.

Please print your name as you would like it to appear.

Name \_\_\_\_\_

Address \_\_\_\_\_

Email Address \_\_\_\_\_

Telephone \_\_\_\_\_

Volunteers are always warmly welcomed! If you would like to take a more active role in Chamber Music Society events, please check this box.

Please add me to your mailing list. (Fill in information above.)

Please send this form and your check to:

**The Chamber Music Society of St. Cloud, PO Box 205, St. Cloud, MN 56302**

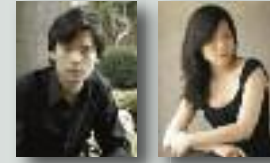
*Thank you!*

*Special bonus for Minnesota Public Radio members: Enclose your MPR member number with your CMS subscription check and you will receive an extra ticket good for any performance!*

## FAMILY CONCERTS — FREE!

There will be two special chances to bring young children to hear great music in an intimate and relaxed setting.

**February 5, 2011 – 1:00 pm**  
**St. Cloud Unitarian Universalist Fellowship**  
**3226 Maine Prairie Road, St. Cloud**



Violinist Stefan Jackiw and pianist Joyce Yang are this season's "young performers" but only in a chronological sense; these exceptional twenty-somethings have won major awards and performed internationally for years. They will introduce their instruments to the audience, playing solos and duos and answering your questions.

**Family Concert Sponsor:**  
St. Cloud Unitarian Universalist Fellowship

**March 5, 2011 – 2:00 pm**  
**St. Cloud Public Library**  
**1300 W. St. Germain St., St. Cloud**



The Four Nations Ensemble will introduce some less-familiar instruments – the baroque flute, violin and cello, and the harpsichord. The group will play subtle and refined music from the court of Versailles, as well as sparkling and dramatic music by the Venetian masters. (Don't worry, they will explain all this – to adults as well as children – first!)

**Family Concert Sponsor:**  
St. Cloud Friends of the Library

## SIX EVENINGS OF CHAMBER MUSIC!

We are thrilled to open our season with a performance by the legendary **Menahem Pressler**, along with a few of his favorite colleagues. We heard this group last January in New York, and immediately invited them to St. Cloud. Fans of the viola will remember that Kim Kashkashian gave a wonderful recital here in 2002; violinist Alexander Kerr and cellist Eric Kim will round out the ensemble.

The Grammy-nominated **Imani Winds** brings a program which spans the classical to the contemporary, much of it inspired by music of other cultures, some of it written for them, and some even written by them! As in their previous visit to St. Cloud, they will spend extra time in the area, visiting various community venues.

In contrast with the octogenarian pianist of our opening concert, we present two exceptional musicians in their early twenties, violinist **Stefan Jackiw** and pianist **Joyce Yang**. Both already have flourishing solo careers, but have decided to tour this year as a duo. They receive rave reviews wherever they go; prepare to be amazed!

One of our favorite baroque groups, the **Four Nations Ensemble**, returns for a third visit, again incorporating a week-long school residency with their concert on our series. They are joined by renowned soprano **Christine Brandes**, who charmed our audience when she appeared here with the Verbruggen Ensemble in 1997.

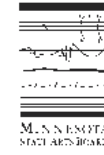
The **Miró String Quartet** returns with a special program of American masterpieces featuring George Crumb's "Black Angels" – as stunningly new as when it was written in 1970. The program will also include Samuel Barber's only quartet, which contains the original version of his famous "Adagio."

Concluding the season is the **Jupiter Quartet**, which consistently garners superlative reviews. The Jupiter will have ample opportunity to demonstrate their skills and musicianship in a challenging program of works by Beethoven and Bartók.

*Please join us for six evenings of wonderful music!*

## THANK YOU!

We gratefully acknowledge the following grants which support all of our programs:



The Chamber Music Society of St. Cloud is a fiscal year 2010 recipient of an Arts Tour Minnesota grant from the **Minnesota State Arts Board**. This activity is funded, in part, by the Minnesota Arts and Cultural Heritage Fund as appropriated by the Minnesota State Legislature with money from the vote of the people of Minnesota on November 4, 2008.



The Chamber Music Society of St. Cloud is funded in part by **United Arts of Central Minnesota**.



The Chamber Music Society of St. Cloud is also funded in part by a grant from the **McKnight Foundation**.



School outreach programs are supported by the **St. Cloud Granite Rotary**.



Grants in support of the residency by the **Imani Winds**:



This activity is funded, in part, by the Minnesota Arts and Cultural Heritage Fund through a grant from the **Central Minnesota Arts Board** as appropriated by the Minnesota State Legislature with money from the vote of the people of Minnesota on November 4, 2008.



This project is supported by a grant from The Fund for the Arts of the **Central Minnesota Community Foundation**.



In support of the residency by the **Four Nations Ensemble**:



The residency by the Chamber Music Society of St. Cloud organized in partnership with the Four Nations Ensemble, the Royalton Elementary School, Whitney Senior Center, and St. Cloud State University, has been made possible with support from **Chamber Music America's Residency Partnership Program**, funded by CMA's Residency Endowment Fund.



This presentation is supported by the Performing Arts Fund, a program of **Arts Midwest** funded by the National Endowment for the Arts, with additional contributions from the Minnesota State Arts Board, General Mills Foundation, and Land O'Lakes Foundation.



This project is also supported by a grant from the United Arts Fund, a program of **COMPAS**, including contributions from hundreds of employees at companies throughout Minnesota.



In support of activities by the **Miró String Quartet**: This project has been made possible by the **National Endowment for the Arts** as part of American Masterpieces: Three Centuries of Artistic Genius.

## SUBSCRIBE TODAY!

The price of a subscription to all six concerts is only **\$90**, or **\$75** for senior citizens — a savings of up to 25%. Single tickets at the door are \$20 for adults, \$15 for seniors, and \$5 for students.

Students may purchase a season subscription for **\$30**.

Children under the age of seven are not admitted to concerts on the series, but are warmly welcomed at our **Family Concerts!** Series tickets are entirely **interchangeable**, so if you miss one concert, you can bring a friend to another. We can't think of any way to make it *more* convenient!

## THANK YOU FOR YOUR SUPPORT!

Ticket sales cover only a portion of our expenses; we depend on loyal audience members to help make the series possible. In uncertain economic times, extraordinary musical experiences are more important than ever. Please consider making a generous tax-deductible contribution this season — every gift is deeply appreciated!



We are committed to ensuring that our programs are accessible to everyone. All venues are wheelchair accessible, including parking and restrooms. Please call for more information.



2010-2011 Season

*He's bringing his friends – shouldn't you be bringing yours?*



*The season begins with Menahem Pressler & Friends on October 16, 2010.*

PO Box 205 • St. Cloud, MN 56302  
320.253.3683  
www.chambermusicstcloud.org

2010-2011 Season



NON-PROFIT  
U.S. POSTAGE  
**PAID**  
ST. CLOUD, MN  
PERMIT NO. 908



### MENAHÉM PRESSLER & FRIENDS

Saturday, October 16 – 7:30 pm  
Calvary Community Church  
1200 Roosevelt Road, St. Cloud

The legendary Menahem Pressler, founding member and pianist of the Beaux Arts Trio for over 50 years, is one of the world's most revered musicians. He will be joined by three of his favorite colleagues – violinist Alexander Kerr, violist Kim Kashkashian, and cellist Eric Kim – in a program of piano quartets.

*“Mr. Pressler invested all of this music with remarkable generosity of spirit and a world of experience in performances full of surprises and revelations...But it was in the Chopin Preludes that Mr. Pressler really emerged as a poet, time and again revealing unsuspected depths in works that have been endlessly plumbed and surveyed.”*  
– New York Times



### IMANI WINDS

Saturday, November 20 – 7:30 pm  
Atonement Lutheran Church  
1144 29th Avenue North, St. Cloud

Since 1997 Imani Winds has taken a unique path, following its mission of expanding the wind quintet repertoire and finding diverse sources of new music. Their eclectic programming, inspiring outreach, and commitment to commissioning new works have created a distinct presence in the classical music world.

*“The caliber of musicianship was only part of the remarkable artistic parcel on display... Most impressive was the collective grace emanating from the players from the moment they walked on stage, which then lingered in the hall, like warmth, well after the concert's end.”*  
– San Francisco Classical Voice

Concert Sponsor: Palmer Printing Company



### STEFAN JACKIW & JOYCE YANG

Saturday, February 5 – 7:30 pm  
Sauk Rapids-Rice High School  
1835 NE Osauka Road, Sauk Rapids

Violinist Stefan Jackiw, lauded for playing that combines poetry and an impeccable technique, has performed in solo recitals and with orchestra throughout the world. Pianist Joyce Yang, known for her stunning virtuosity and heartfelt lyricism, was Silver Medalist of the 2005 Van Cliburn International Competition. Together they will present what is sure to be a memorable evening of chamber music for violin and piano.

*“The Mendelssohn was remarkable for long and singing lines, fabulous intonation, effortlessly sparkling virtuosity, and imaginative shaping of phrases and dynamics; Jackiw's bow arm left violinists in the audience awe-struck and envious... in his hands, familiar music once again becomes fresh and personal.”*  
– Boston Globe

*“...an innovative program in which stunning technical skill was equaled by impressive interpretive sensitivity... presented with total conviction and nearly super-human technical control...played as close to perfection as one could reasonably desire.”*  
– Sarasota Herald Tribune

Concert Sponsor: Connie & Jerry Von Korff



### FOUR NATIONS ENSEMBLE & CHRISTINE BRANDES

Saturday, March 5 – 7:30 pm  
Atonement Lutheran Church  
1144 29th Avenue North, St. Cloud

A baroque ensemble of harpsichord, violin, cello and flute, Four Nations will be joined by renowned soprano Christine Brandes for a program of music from Venice and Versailles. This will be the culmination of an innovative one-week residency in the St. Cloud area.

*“But the most compelling performance of the evening was a colorful rendering of Beethoven's Sonata in F in which Ms. O'Sullivan and Mr. Appel made the most of the timbral peculiarities of their instruments. The finale had a brashness and bite rarely achieved on modern instruments and contrasts between loud extroverted passages and the pianissimo sections that followed were particularly vivid.”*  
– New York Times

*“It was worth begging, borrowing or stealing a ticket to hear the vivacious, wholly natural Susanna of the American Christine Brandes, whose every word in both aria and recitative was infused with meaning, musical intelligence and vocal beauty.”*  
– Opera



### MIRÓ STRING QUARTET

Saturday, April 9 – 7:30 pm  
Calvary Community Church  
1200 Roosevelt Road, St. Cloud

The dynamic Miró Quartet, one of America's highest-profile chamber groups, has risen to the top of the international chamber music scene in only a decade, captivating audiences and critics around the world with its youthful intensity and mature interpretations. The group returns for its fourth appearance on this series, with a program featuring George Crumb's “Black Angels,” an iconic work written in response to the Vietnam War.

*“The performance...left the audience in stunned silence. The Miró's exceptional tonal focus and interpretive intensity kept the music's various subtexts in urgent perspective. Especially in the elegiac Adagio, the players held phrases and gauged dynamics for all their expressive worth. You could feel the anguish in your bones. No one moved after the final notes of the last movement slowly died away.”*  
– Cleveland Plain Dealer

Concert Sponsor:  
St. Cloud Ear, Nose & Throat Clinic



### JUPITER STRING QUARTET

Saturday, May 7 – 7:30 pm  
Atonement Lutheran Church  
1144 29th Avenue North, St. Cloud

Winners of the Banff International String Quartet Competition as well as the coveted Cleveland Quartet Award, this group is one of the foremost young quartets in the nation. They feel a strong connection to the core string quartet literature, particularly the quartets of Beethoven and Bartók; their performance here will include works by both composers. The Jupiter will also be the featured artists at our annual ensemble workshop and our fundraiser, Musical Chairs.

*“Every so often a performance leaves us in awe of its loving sophistication, its attention to the finest details of balance and expression. That's how it was with the Jupiter String Quartet's performance...Every phrase was elegantly inflected. The dissonant note in pivotal chords was ever so subtly underlined. The little hesitations and decrescendos before major cadences were managed just so. And yet nothing was overdone or overly self-conscious.”*  
– Dallas Morning News

Concert Sponsor:  
Sunray Printing Solutions, Inc.

## TICKET ORDER FORM

Please send me:

\_\_\_\_\_ adult subscriptions @ \$90 \$ \_\_\_\_\_  
\_\_\_\_\_ senior subscriptions @ \$75 (age 65 and up) \$ \_\_\_\_\_  
\_\_\_\_\_ student subscriptions @ \$30 \$ \_\_\_\_\_  
(age 7 and up, full time students)

I am including an extra donation of:

\$50 Friend  
 \$100 Donor  
 \$250 Patron  
 \$500 Guarantor  
 \$1000 Benefactor  
 Other \_\_\_\_\_

Total: \$ \_\_\_\_\_